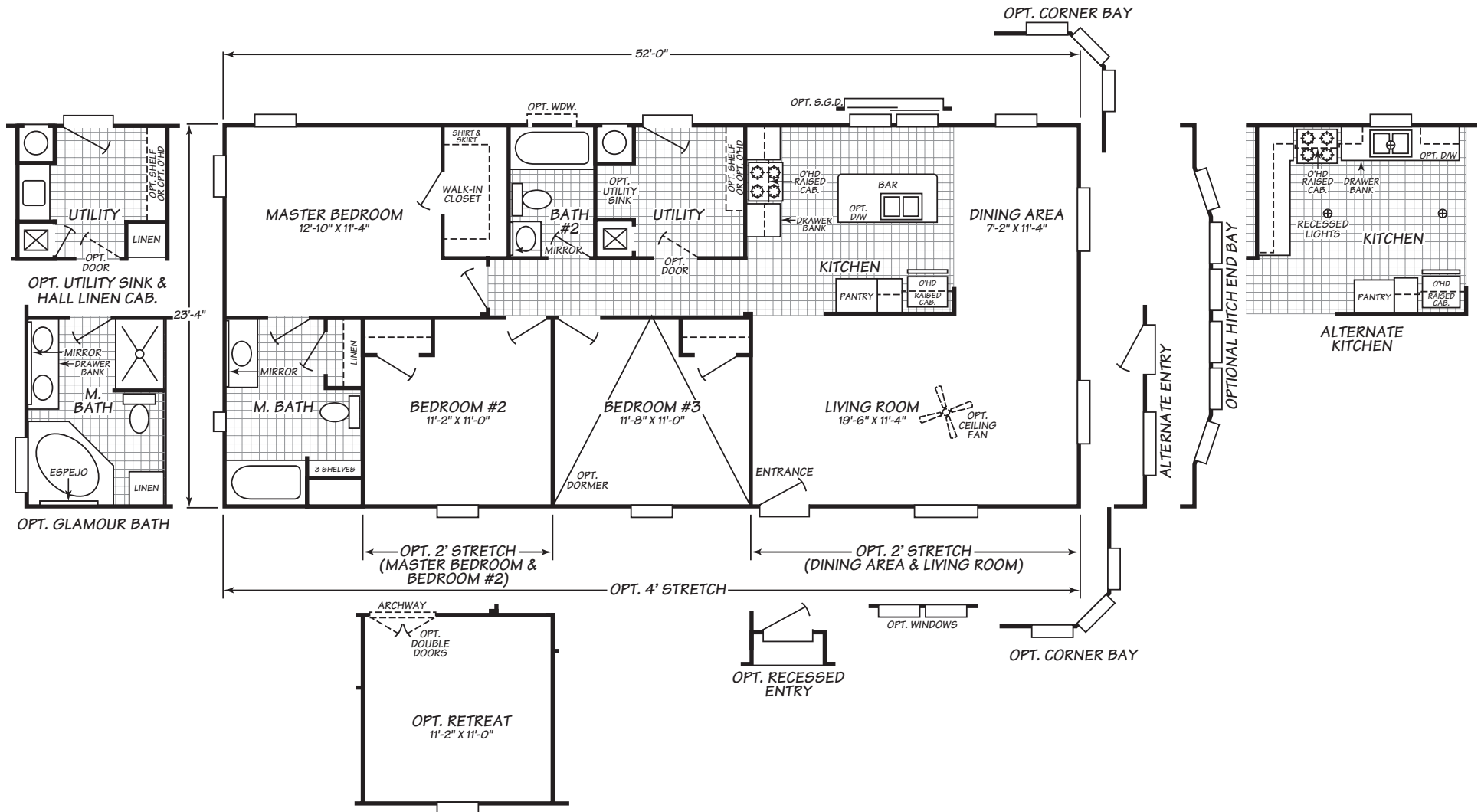


Carriage Manor Series Model 3523D

3 Bedrooms • 2 Baths • 1,213 Square Feet



Fleetwood Homes reserves the right to change colors, prices, specifications, models, dimensions and materials without notice. Rendering and diagrams are meant to be representative and, in keeping with Fleetwood's policy of constant updating and improvement, may vary from the actual home. All dimensions are nominal and approximated. Square footage is measured from exterior wall to exterior wall, and is an approximate figure. Length indicated in floorplans is floor length only. The length of the hitch is not included. (Add four feet to arrive at transportable length.) Ask your retailer for specifics. PRICES AND SPECIFICATIONS SUBJECT TO CHANGE WITHOUT NOTICE OR OBLIGATION.

Interior

Cathedral Knockdown Vaulted Ceilings Spacious & smooth, offer a more open feeling

Vinyl Gypsum Wall Panels Attractive, easy to clean, and low maintenance

Shaw Guard Treated Carpet Easy cleaning in all living areas for high performance

No-Wax Congoleum® Diamondflor Vinyl Floor Covering Beautiful appearance and easy to care for

30" Embossed Two Panel White Interior Doors with Nickel Doorknobs Contemporary & stylish with easy to use fixtures, creates a designer home look

Metal Mini-Blinds and Valances Functional and stylish- provide total privacy

Rich Decor Options Many designer colors to match personal taste

Ventilated Vinyl Coated Closet Shelving Keeps clothing and personal items organized with easy to clean shelving

Butterfly Nickel Hinges and Tulip Nickel Knobs Gives a stylish and new decorative appearance

Exterior

Composition Shingles Long-lasting, low-maintenance performance with a 20 year limited warranty for peace of mind

Nominal 3:12 Roof Pitch Offers exterior eye appeal (on most models)

2X4" Exterior Wall Sturdy structural strength

Cemplank® Siding Durable, low maintenance, and trusted brand

2X6" Floor Joist Construction Stable, strong foundation for home structure and furnishings

Window Trim Throughout Perfect compliment to your windows and adds rich detail

Dual Glaze Aluminum Window Frame Fill rooms with dramatic natural light and enhances custom home appearance

12" Front Overhang Enhances your home's exterior and a finished residential appearance

36X80" Inswing Front Entry Door Extra-wide entryway for improved access includes deadbolt, peephole, & knocker for your family's safety

Bath

60" Tub/Shower Durable, attractive and easy to clean

Dual Control Tub/Shower Diverter For easy temperature regulation

Laminate Backsplash Protects walls from water damage

Acrylic Lavy Bowl Easy maintenance

Commode Energy efficient low flow 1.6 Gal per flush

Mirror with Polished Edge Distinctive mirror designed to add a touch of european elegance to your bathroom

36" High Countertops in Master Bathroom Custom Vanity cabinet for your master bath that has all the luxury of a fine piece of furniture

Exhaust Fan For better ventilation

Towel Bar & Tissue Holder Ready to move in with the convenience of towel and tissue placements

Kitchen

Whirlpool® Appliances Offers name brand confidence, reliability & hassle-free service

Whirlpool® 18.1 Cu Ft Frost Free Refrigerator Handle all your grocery needs and family's appetite

Cabinet Doors with Raised Panels Add quality & beauty to your kitchen & bath rooms

Bank of Drawers Provides extra storage for additional needs

Laminate Backsplash Protects walls from water damage

Stainless Steel Kitchen Sink Durable, stain resistant sink is chip proof with easy to use lever faucet

Dual Control Faucets Allows you to control water temperature independently

Pantry Shelving Custom pantry closet design that will help keep your groceries organized

Utilities, Safety & Energy

100 Amp Interior Electrical Panel Box Designed and installed for safety, easy access and ample household capacity

29 Gallon Dual Element Water Heater Abundant hot water supply for laundry, bath, and kitchen

Smoke Detectors with Battery Back-Up Protects every resident from fire danger

Bedroom Ceiling Lights Creates a beautiful well lit bedroom while providing ease and comfort

Zone II Insulation Package For energy efficiency, includes: R-28 ceiling, R-11 wall, R-11 floor

56,000 or 77,000 BTU Gas Furnace (Varies by Model) Provides comfort and energy-saving efficiency

Interior Electrical Panel Provides easy access and security

Interior Electrical Receptacles Nailed to studs for added safety

6" Glass Globes Elegant and ideal lighting fixture

Bedroom Ceiling Lights Creates a beautiful well lit bedroom while providing ease and comfort

Options

Upgrade Appliance Package Add or upgrade brand name appliances to suit any taste (White, Black & Stainless Steel)

Whirlpool® Washer and Dryer Brand name appliances that you can rely on

Skylight and Solar Tube Adds natural light (per plan)

Ceramic Tile Splash Behind Range For easy cleaning and a more contemporary look

2X6" Exterior Wall Frames, 16" on Center Additional structural strength while providing an increased R value of R19

Linoleum or Ceramic Tile Entry Reduces carpet wear and stains

Deluxe Carpet Upgrade Luxurious, heavier weight carpet in designer colors

Laminate Flooring Upgrade Tough, long-wearing laminate flooring available in appealing designer colors

Upgrade To Luxury Bath 48" Walk-in Shower, Drop-in Tub, Double Sink, and 3--Door Linen Closet

Fireplace Half Rock or Full Rock corner fireplace or Drywall with Tile