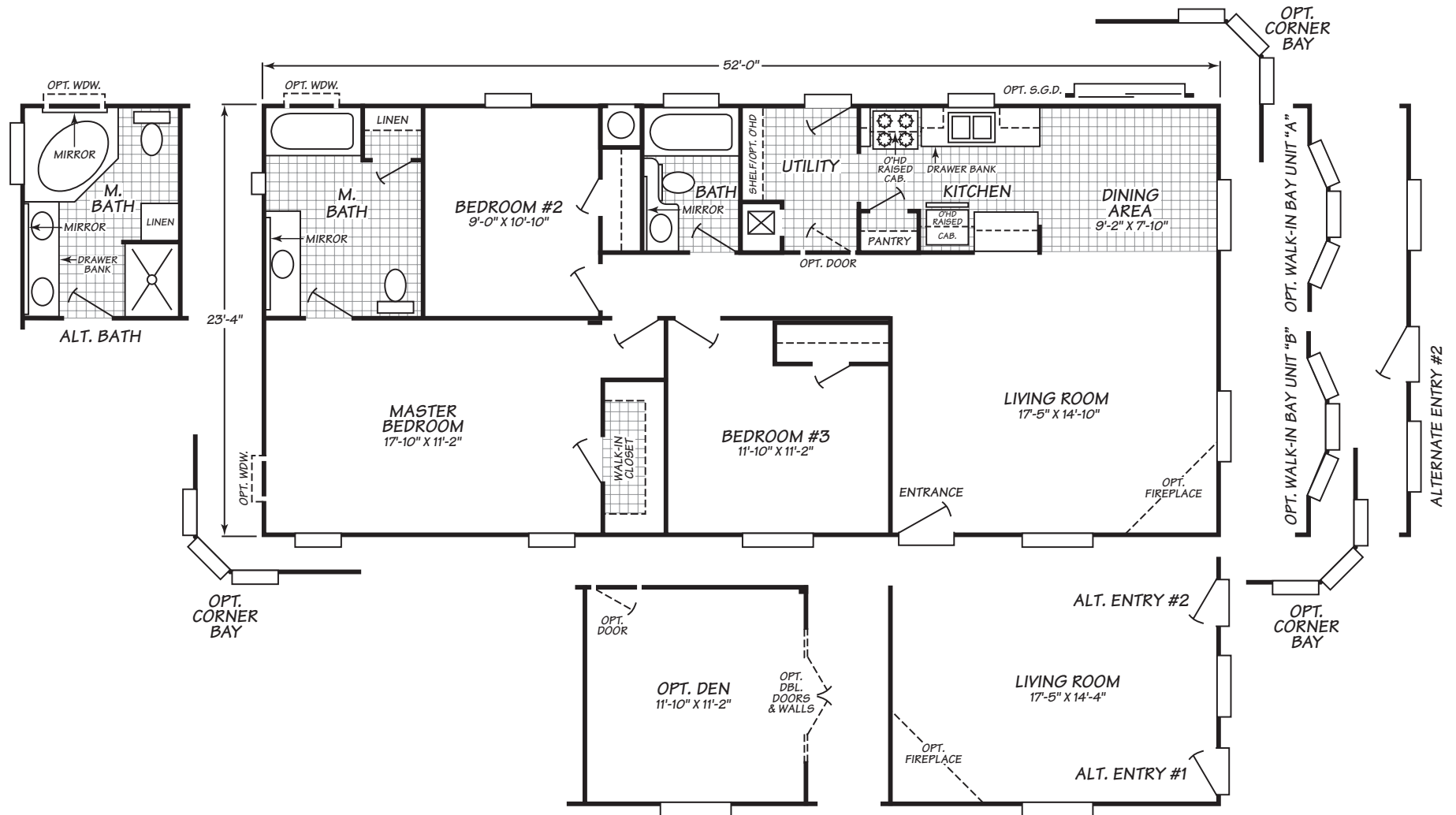


Festival II Series Model 3523L

3 Bedrooms • 2 Baths • 1,213 Square Feet



Fleetwood Homes reserves the right to change colors, prices, specifications, models, dimensions and materials without notice. Rendering and diagrams are meant to be representative and, in keeping with Fleetwood's policy of constant updating and improvement, may vary from the actual home. All dimensions are nominal and approximated. Square footage is measured from exterior wall to exterior wall, and is an approximate figure. Length indicated in floorplans is floor length only. The length of the hitch is not included. (Add four feet to arrive at transportable length.) Ask your retailer for specifics. PRICES AND SPECIFICATIONS SUBJECT TO CHANGE WITHOUT NOTICE OR OBLIGATION.

Interior

Cathedral Knockdown Vaulted Ceilings Spacious & smooth, offer a more open feeling

Vinyl Gypsum Wall Panels Attractive, easy to clean, and low maintenance

Shaw Guard Treated Carpet Easy cleaning in all living areas for high performance

No-Wax Congoleum® Diamondflor Vinyl Floor Covering Beautiful appearance and easy to care for

Craftman Style Front Entry Door Traditional elegance, a clean and a classic style with a white finish

Metal Mini-Blinds and Valances Functional and stylish- provide total privacy

Rich Decor Options Many designer colors to match personal taste

Exterior

Trimline Shingle Over Ridge Vent Eliminates numerous vents for an elegant residential appearance

Composition Shingles Long-lasting, low-maintenance performance with a 20 year limited warranty for peace of mind

4:12 Roof Pitch Available Offers exterior eye-appeal - (3:12 offered for model Festival 7493L)

2X4" Exterior Wall Sturdy structural strength

Cemplank® Siding Durable, low maintenance, and trusted brand

Vinyl Dual-Glaze Windows Fill rooms with dramatic natural light and enhance custom home appearance

Bath

One-Piece Fiberglass Tub/Shower Durable, attractive, and easy to clean

Single Lever Faucets Refined single lever faucet fixtures are attractive and easier to use

Dual Control Tub/Shower Diverter For easy temperature regulation

Banjo Countertop in Guest Bath (Most Models) Space-saving countertop design, ideal for health & beauty products

Laminate Backsplash Protects walls from water damage

Acrylic Lavy Bowl Easy maintenance

36" High Countertops in Master Bathroom Custom Vanity cabinet for your master bath that has all the luxury of a fine piece of furniture

Hollywood Light Fixture Above Vanity Flattering light source illuminates vanity mirror

Kitchen

Whirlpool® Appliances Offers name brand confidence, reliability & hassle-free service

Garbage Disposal Added convenience for cleaning and food disposal

Cityscape Cabinets Spacious, durable, and appealing design with a custom kitchen style

Cabinet Doors with Raised Panels Add quality & beauty to your kitchen & bath rooms

Kitchen Cabinet Crown Molding Generous crown moldings enhance cabinets

Bank of Drawers Provides extra storage for additional needs

Single Lever Faucet with Pull-Out Sprayer Refined single lever faucet fixtures are attractive and easier to use

Laminate Backsplash Protects walls from water damage

Utilities, Safety & Energy

100 Amp Interior Electrical Panel Box Designed and installed for safety, easy access and ample household capacity

30 Gallon Dual Element Water Heater Abundant hot water supply for laundry, bath, and kitchen

Dual Pane Vinyl Framed Windows Easy to clean, low maintenance, and helps to lower power bills

Smoke Detectors with Battery Back-Up Protects every resident from fire danger

Shut Off Valves Throughout Home Quickly shut off water for repairs or in an emergency

Plumb/Wire For Washer and Dryer Provides convenient hookup

Whole House Shut-Off Valve Quickly shut off water for repairs or in an emergency

Zone II Insulation Package For energy efficiency, includes: R-28 ceiling, R-11 wall, R-11 floor

56,000 or 77,000 BTU Gas Furnace (Varies by Model) Provides comfort and energy-saving efficiency

Chandelier Beautifully enchanting, elegant and adds a dramatic lighting detail in your kitchen

Options

Upgrade Appliance Package Add or upgrade brand name appliances to suit any taste (White, Black & Stainless Steel)

Whirlpool® Washer and Dryer Brand name appliances that you can rely on

Molding Upgrade Package Upgrade enhances moldings throughout home

Skylight and Solar Tube Adds natural light (per plan)

Ceramic Tile Splash Behind Range For easy cleaning and a more contemporary look

2X6" Exterior Wall Frames, 16" on Center Additional structural strength while providing an increased R value of R19

Hardwood Raised Panel Cabinet Doors Long-lasting and beautiful, enriches the appearance of kitchen cabinets

Whirlpool® Glamour Tub Add a whirlpool to your glamour bath for the ultimate in relaxation

Linoleum or Ceramic Tile Entry Reduces carpet wear and stains

Deluxe Carpet Upgrade Luxurious, heavier weight carpet in designer colors

Fleetwood Homes reserves the right to change colors, prices, specifications, models, dimensions and materials without notice. Rendering and diagrams are meant to be representative and, in keeping with Fleetwood's policy of constant updating and improvement, may vary from the actual home. All dimensions are nominal and approximated. Square footage is measured from exterior wall to exterior wall, and is an approximate figure. Length indicated in floorplans is floor length only. The length of the hitch is not included. (Add four feet to arrive at transportable length.) Ask your retailer for specifics. PRICES AND SPECIFICATIONS SUBJECT TO CHANGE WITHOUT NOTICE OR OBLIGATION.